

## DCFT Motor

Our innovative fabric tensioning motor is designed to get the most out of external shades and blinds.



### Convenient Charging

Compatible with our external battery pack mounted to the outdoor shade cassette, ensuring hassle-free access for recharging.



### Serviceability

Designed for quick, easy, and cost-effective battery replacement if required.



### Fabric Tensioning

Selectable modes including E-Type (Default / Off) and Auto FT Mode for one-action lock and tensioning with our Ultra-Lock hardware.



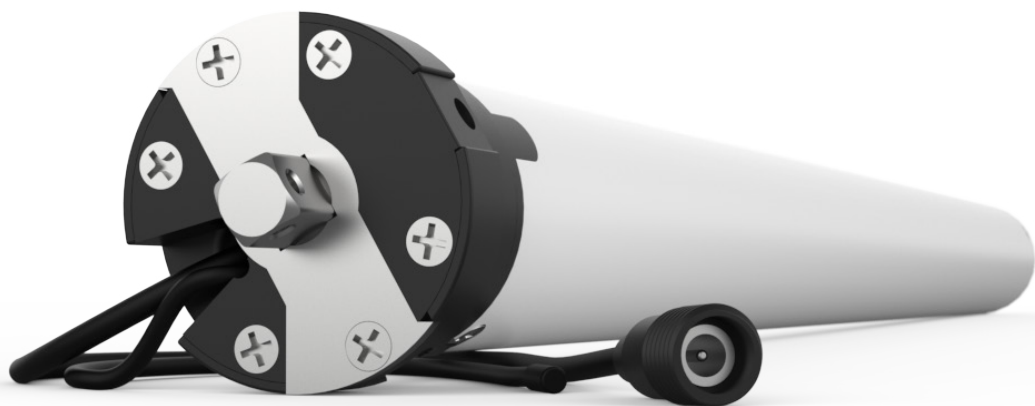
### Effortless Installation

Our battery-powered solution is designed for simple, cost-effective installation – no electrician needed. Perfect for locations without direct power access.



### Impact Detection

Senses an obstacle in the blinds path during downward movement and redirects the shade to protect the motor, hardware and fabric, ensuring product longevity.



**5** YEAR WARRANTY



ARC™ (Automate Radio Communication) is Rollease Acmeda's proprietary technology utilizing 433MHz radio communication with bi-directional feedback that brings Automate motorized shading systems together.

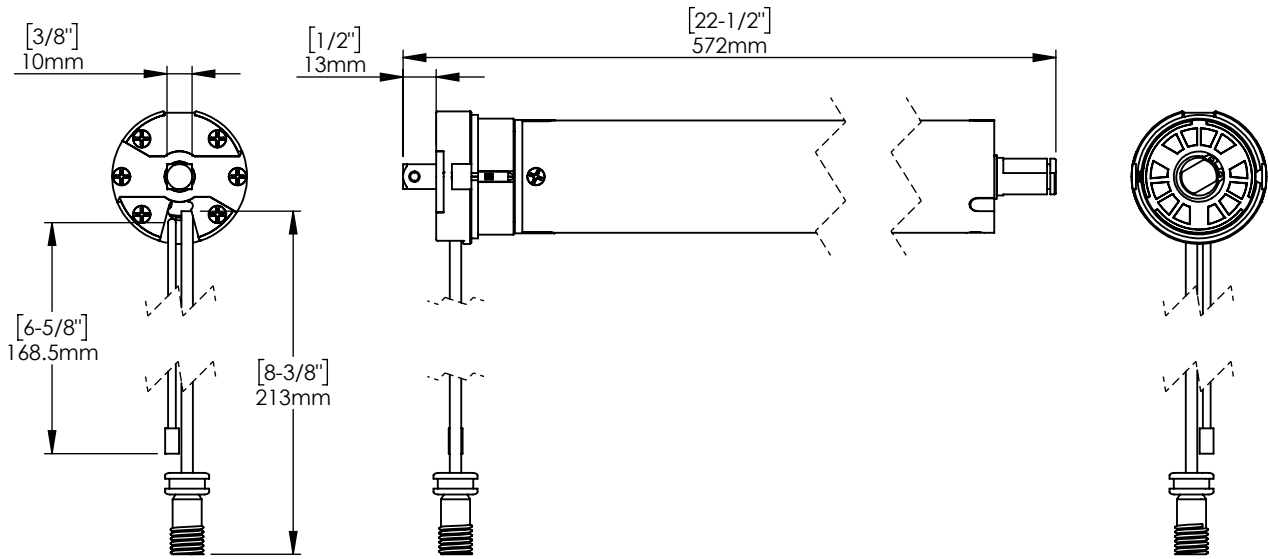
A Division of Rollease Acmeda

# Product Specifications

Part #: MT01-1245-069001 Automate | DCFT 15Nm Motor [Ø45/12V/10rpm]

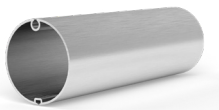
<b>Voltage</b>	12V-DC	<b>IP Rating</b>	IP44
<b>Torque</b>	15 Nm	<b>Limit Switch Type</b>	Electronic
<b>Max Run Time</b>	12 min	<b>Current</b>	4.1 A
<b>Speed</b>	10 RPM	<b>Temp Working Range</b>	50°F to 131°F (-10°C to 55°C)
<b>Radio Frequency</b>	433.92 MHz	<b>Insulation Class</b>	A
<b>RF Modulation</b>	FSK	<b>Power</b>	50 W

## Dimensions



## Compatible Parts

### Tubes



### Crown / Reducer



### Drive



EXTERNAL

Aluminium 78mm STD	RE20-0311-050178	MT03-0106-050006
Aluminium 78mm HD		
Steel 78mm		

Note: Due to integrated impact detection, DCFT motor MT01-1245-069001 is not compatible with 'impact detect' drive.

## Applications

- Outdoor Shades (Zipscreen)

## Compatible Products (refer to catalog for full item listings)

### Controllers



Pulse HUB & App



Push Remotes

### Sensors



Sun and Wind Sensor

### Power Options



DC FT Battery Pack



DC FT Extension Cable