



AUTOMATE™

A DIVISION OF ROLLEASE ACMEDA

Manual Shade Retrofit Guide

CONTENTS

SECTION A | OVERVIEW 3

- OVERVIEW/OBJECTIVE3
- APPROACH3
- KEY CONSIDERATIONS3
- RETROFIT ASSESSMENT KIT4
- PHASE I4

SECTION B | ROLLERS 5

- 1. CHECKLIST: ASSES THE SHADE5
- 1. PREPARE SHADE FOR INSPECTION6
- 2. IDENTIFY THE TUBE6
- 2A . TUBE IS NOT ROLLEASE6
- 3. SELECT THE RIGHT SIZE MOTOR6
- 4. SELECT BRACKET ADAPTER, CROWNS AND DRIVES7
- 5. MOTOR / TUBE COMPATIBILITY AND LIFTING CAPACITY8
- 6. MOTOR DATA SHEET WITH RECOMMENDED MINIMUM WIDTHS9
- 7. TORQUE CALCULATOR10
- 8. KNOWN RETROFIT-ABLE SHADE CHART11
- 9. RETROFIT IMPLEMENTATION12
- 10. SHADE RETROFITING USING 12V MOTOR13
- 11. SHADE RETROFITING USING 5V MOTOR13

SECTION A | OVERVIEW

OVERVIEW/OBJECTIVE

Motorizing manual window coverings is usually easier than you may think. Whether the shades are brand new or already exist in a home, adding motorization creates a compelling new shade control experience for a homeowner. A shade dealer can also realize considerable financial upside by motorizing shades themselves. Our objective here in this document is to empower shade dealers to retrofit manual shades with motors if they so choose. We are committed to document the mechanics of each shade type and share this information with dealers who choose to motorize shades themselves.

APPROACH

The approach is simple. Three steps:

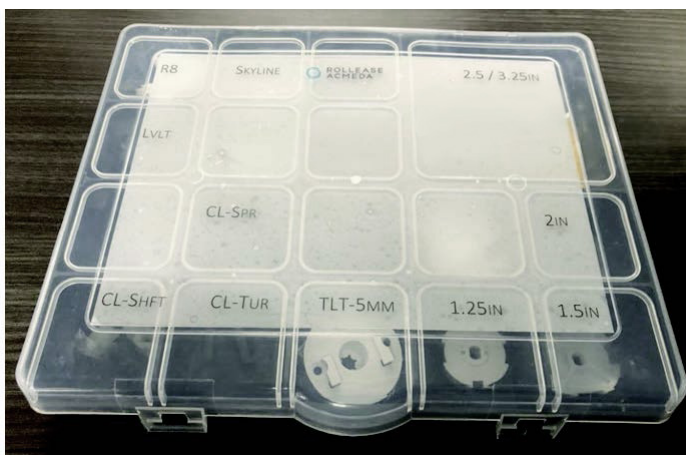
1. Assess the shade (tube/headrail & brackets)
2. Planning the retrofit/Ordering Parts from Rowley
3. Retrofit the shade

KEY CONSIDERATIONS

- Some retrofits are easier than others. Please read through each retrofit guide in detail. We have tried to document the various shade types and systems as best as possible.
- There are an incredible amount of hardware systems in the field. Many are Rollease or knock offs. There are other vendors with unique tubes and bracketing systems. As we run into them, we will document the retrofit-ability. Many systems are compatible with Rollease motors; some are not. Please qualify each retrofit opportunity to ensure the best chance of success.
- It often makes sense to simply order motorized from the factory. Consider if/when retrofit is right for you and your client.
- Retrofitting manual shades usually voids the original manufacturer's warranty. Please consider this when making the decision to retrofit.

RETROFIT ASSESSMENT KIT

The Retrofit Assessment Kit is everything that you need to start retrofitting your shades in only one sleek box. It contains all the accessories and adapters that you use to retrofit a variety of shades from a manual control to a Automate Motorized system. The box is meant to qualify a retrofit, try out bracket adapters and drives to ensure compatibility with various systems PRIOR to retrofit attempt.



PN: MK02-MT01-000001 - Retrofit Assessment Kit

Kit Content:

Edit - BOM Structure			
Type	Part Number	Description	Qty. per
Kit	MK02-MT01-000001	Retrofit Assessment Kit	1.00
Item	MT03-0207-050016	Cord Lift Motor Adapter for Springs Headrail	1.00
Item	MTAD-CLHR-TUR	Motor Adapt Cord Lift - Turnils Headrail	1.00
Item	MTAD-CLSA-4MMSQ	Shaft Adapt Cord Lift - 4mm Square	1.00
Item	MTAD-CLSA-5MMSQ	Shaft Adapt Cord Lift - 5mm Square	1.00
Item	MTAD-CLSA-D	Shaft Adapt Cord Lift - D Shaft	1.00
Item	MTAD-CLSA-V	Shaft Adapt Cord Lift - V Groove Shaft	1.00
Item	MTAD-TILT-SA-5HEX	Shaft Adapt for Tilt Motor-5MM HEX	1.00
Item	MTDR-25-1.25	Drive for 25mm DC motor in 1.25" tube	1.00
Item	MTDR-25-28-1.5	Drive for 25/28mm DC motor in 1.5" tube	1.00
Item	RTA5LS40	"Adapter Set 2"" Tube for LS40 and ST40 Motors"	1.00
Item	RB24-0163-050001	Drive for 45mm motor in 2.5" & 3.25" tubes	1.00
Item	MT02-0101-069007	BB REMOTE CONTROL ARC 15Ch	1.00
Item	MT03-0205-069001	AUTOMATE BRACKET ADAPTOR R8 SERIES	1.00
Item	MT03-0206-069002	AUTOMATE BRACKET ADAPTOR SKYLINE SERIES	1.00
Item	MT03-0207-069015	AUTOMATE BRACKET ADAPTOR LOUVOLITE SERIES	1.00
Item	MT03-0205-069002	AUTOMATE BRACKET ADAPTOR R16-SERIES	1.00
Item	TM10-0286-000000	Tough Box for Retrofit Assessment Kit	1.00
Item	TM10-0285-000000	Screwdriver for Retrofit Assessment Kit	1.00

PHASE I

This is our first phase of retrofitting. We have focused primarily on motorization of existing shades which use Rollease manual hardware + the most popular shades from other manufacturers (based on feedback from dealers on the front lines). This is a living document and will be updated as new retrofits are encountered and documented. Successful, documented retrofits currently include:

- Solar and Blackout Roller shades

It is critical that you qualify each shade before initiating a motorization retrofit. Here, we will walk you through the process to identify each shade's hardware system and it's retrofit compatibility.

1. CHECKLIST: ASSESS THE SHADE

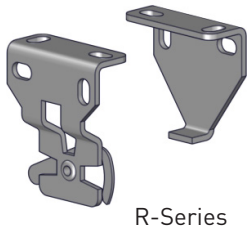
ROLLERS/ROLLER TYPE PRODUCT (TUBULAR MOTOR)

- a) Are the brackets compatible?
 - Skyline
 - R-Series
 - Louvolite
 - Others with known retrofit-ability?
- b) Determine appropriate motor
 - Tube size/profile
 - Size of shade
 - Weight of fabric
 - Torque calculator (for Romans)
- c) Select appropriate Crown and Drive set
 - Based on Motor type and Tube size

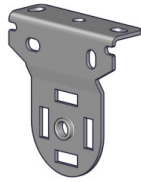
SECTION B | ROLLERS

1. PREPARE SHADE FOR INSPECTION

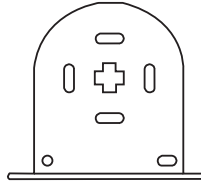
Measure and note the shade size. Remove the shade from the window. Inspect the shade hardware to determine bracketing system. Refer to images below to identify different bracket systems. Next in a clean space, carefully remove the clutch or the idler from the shade.



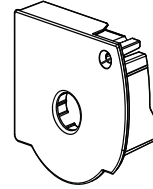
R-Series



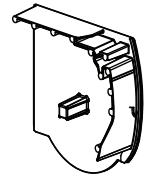
Skyline



Louvolite



Shade-o-Matic



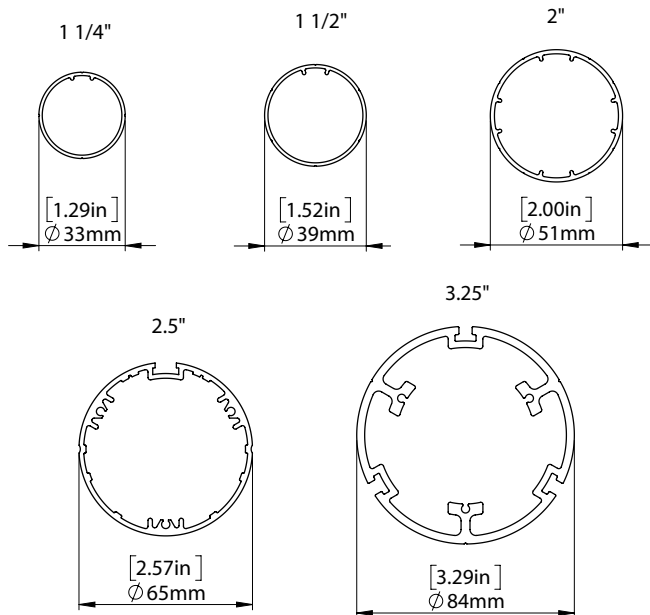
Sheer Shading

2. IDENTIFY THE TUBE

Many fabricators use/have used standard Rollease tube profiles. Each fabricator has different build guidelines – the chart below identifies typical tube sizes for manual roller shades (measured in feet). Sometimes fabricators will use a 1.5" in lieu of the 1.25" tube - make sure to measure or to size with a loose motor adapter.

	1	2	3	4	5	6	7	8	9	10
1										
2										
3										
4										
5										
6										
7										
8										
9										
10										
1.25" Tube										
1.5" Tube										
2.0" Tube										

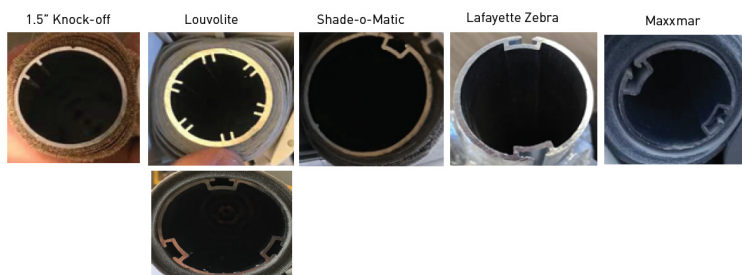
1.25" Tube << Use 25mm motor
 1.5" Tube << Use 25mm motor
 2.0" Tube << Use 28mm motor



Springs Window Fashions utilizes this chart with Rollease tubes when fabricating manual roller

2A. TUBE IS NOT ROLLEASE

Occasionally, you will run into a third party tube. The adapters in each kit fit a variety of non Rollease tubes - some are direct fits while others may require slight modification. We recommend you carry an adapter kit to check fit in each potential retrofit.



SECTION B | ROLLERS

3. SELECT THE RIGHT SIZE MOTOR

Tube size and shade width play a critical roll in considering motor selection. Generally, we recommend:

- 25mm 1.1 Nm motor for shades up to 7'x7' and a 1.25" or 1.5" tube.
- 28mm 2.0Nm motor for shades up to 10'x10' with a 1.5" or 2.0" tube.

Refer to chart below for a deeper dive into motor selection. (In case of narrow shades <21", use DC motor with rechargeable battery pack)

Motor Type - Per Rowley Order Form	MTDCRF25-1.1 (DC Motor - Short blinds)	REMZDCB-SW25-1.1 (Switch Wand Motor)	MT01-1325-069002	MT01-1328-069001	MT01-1335-069001	MT01-1345-069001
Max Shade Size	84"x84"	84"x84"	84"x84"	120"x120"	120"x120"	144"x144"
Tube Size Options	1.25" and 1.5"	1.25" and 1.5"	1.25" and 1.5"	1.5" and 2.0"	2.0"	2.5" and 3.25"
Width of Motor	11.77"	17.56"	21.93"	25.59"	33.50"	32.04"

4. SELECT BRACKET ADAPTER, CROWNS AND DRIVES

We offer a complete kit for each motor. This will include crowns and drives for each of the "Tube size options" listed in the chart above on Step 3. Additionally, each motor will have a flush mount adapter for the three Rollease bracketing systems (Skyline, R8 and R16) as shown below. (Will come with Skyline attached to motor)

Bracket Adapters (only for 12V Motors)



SKYLINE
PN: MTAD-252835-SL



R-SERIES
PN: MTAD-252835-RS

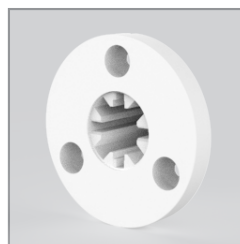


LOUVOLITE
PN: MTAD-BTG-252835

Bracket Adapters (only for 5V Motors)



R8
PN: MT03-0205-069001



R16
PN: MT03-0205-069002



SKYLINE
PN: MT03-0206-069002



LOUVOLITE
PN: MT03-0207-069015

Crowns and Drive Examples (for both 12V and 5V Motors)



25mm - 1.25in
PN: MTCRDR-25-1.25



25mm - 1.5in
PN: MTCRDR-25-1.5



28mm - 1.5in
PN: MTCRDR-28-1.5

SECTION B | ROLLERS

5. MOTOR / TUBE COMPATIBILITY AND LIFTING CAPACITY

Item #	Item Description	Motor Torque (NM)	Lifting Capacity (lbs) Per Tube																	
			1"	1-1/8"	1-1/4"	1-1/2"	S45 Light	S45 Standard	S45 Heavy Duty	2" Ribbed	2" Smooth	S60	2-1/2"	3-1/4"						
DC18for 1" & 1-1/8 Tube	MTDCRF18-0-2	DC 18mm/0.2Nm/80r	0.20	3.54	3.15															
	MTDCBRF18-0-2	Li-Ion [18mm/0.2Nm/80r]	0.20	3.54	3.15															
DC25 Switch Motor FOR	MTDCBSW25-1.1	Li-Ion [25mm/1.1Nm/40r]	1.10			15.58	12.98	12.36	11.50	11.24										
	MTDCRF25-1.1	DC [25mm/1.1Nm/40r]	1.10			15.58	12.98	12.36	11.50	11.24										
DC25 for 1.25" & 1.5" Tube	MTDCBRF25-1.1	Li-Ion [25mm/1.1Nm/40r]	1.10			15.58	12.98	12.36	11.50	11.24										
	MTD1-1325-069002	LHON 1.1Nm ARC Motor [25.5V/20rpm]	1.10			15.58	12.98	12.36	11.50	11.24										
DC28 for 1.5" & 2" ribbed Tube	MTDCRFQ28-2	DC [28mm/2.0Nm/28r]	2.00			23.60	22.48	20.91	20.44	17.70										
	MTDCBRFQ28-2	Li-Ion [28mm/2.0Nm/28r]	2.00			23.60	22.48	20.91	20.44	17.70										
DC35 for 2" ribbed Acmeda s45 Tube	MTD1-1328-069001	LHON 2.0Nm ARC Motor [28.5V/20rpm]	2.00			23.60	22.48	20.91	20.44	17.70										
	MTDCBRFQ28-2CT	28mm DC RE Quiet Battery Motor	2.00			23.60	22.48	20.91	20.44	17.70										
DC45 for 2" ribbed Acmeda s45 Tube	MTDCRF35-3	DC [35mm/3.0Nm/28r]	3.00				33.72	31.37	30.66	26.55										
	MTDCBRF35-3	Li-Ion [35mm/3.0Nm/28r]	3.00				33.72	31.37	30.66	26.55										
ac35 for 2" Ribbed Acmeda s45 Tubes	MTDCRFQ45-3	DC [45mm/3.0Nm/28r]	3.00																	
	MTDCRF45-10	DC [45mm/10Nm/9r]	10.00																	
AC45 for 2" Smooth 2" & 1/2" Tubes	MTDCBRF45-3	Li-Ion [45mm/3.0Nm/28r]	3.00																	
	MTDCBRF45-10	Li-Ion [45mm/10Nm/9r]	10.00																	
ac35 for 2" Ribbed Acmeda s45 Tubes	MTACML35-6	M [35mm/6.0Nm/33r]	6.00				67.44	62.74	61.31	53.11										
	MTACQML35-6	M [35mm/6.0Nm/24r]	6.00				67.44	62.74	61.31	53.11										
AC45 for 2" Smooth 2" & 1/2" Tubes	MTACRF35-6	E [35mm/6.0Nm/33r]	6.00				67.44	62.74	61.31	53.11										
	MTACORF35-6	E [35mm/6.0Nm/24r]	6.00				67.44	62.74	61.31	53.11										
AC45 for 2" Smooth 2" & 1/2" Tubes	MTACQ45-10-M	M [45mm/10Nm/21r]	10.00																	
	MTAC45-20-M	M [45mm/20Nm/32r]	20.00																	
AC45 for 2" Smooth 2" & 1/2" Tubes	MTACORF45-10	E [45mm/10Nm/21r]	10.00																	
	MTACRF45-15	E [45mm/15Nm/32r]	15.00																	

SECTION B | ROLLERS

6. MOTOR DATA SHEET WITH RECOMMENDED MINIMUM WIDTHS

Motor Model	Torque (in-lb/Nm)	Tube Diameter	Crown & Drive	Skyline Bracket Adapters	Power Supply	Minimum Shade
18mm DCRF MTDCRF18-0.2	1.77/0.2	1" (25mm) 1 1/8" (28mm)	MTCRDR-18-1 (1") MTCRDR-18-1.125 (1-1/8")	MTAD-18-SL (Skyline) MTAD-18-RS (R-Series)	MTDCPS- 18-25	15-1/2" 15-1/2"
18mm DCRF Battery MTDCBRF18-0.2	1.77/0.2	1" (25mm) 1 1/8" (28mm)	MTCRDR-18-1 (1") MTCRDR-18-1.125 (1 1/8")	MTAD-18-SL (Skyline) MTAD-18-RS (R-Series)	MTDCB- CHARGE	21-5/8" 21-5/8"
25mm DC Switch Wand Battery MTDCBSW25-1.1	9.74/1.1	1 1/4" (32mm) 1 1/2" (38mm)	MTCRDR-25-1.25 (1 1/4") MTCRDR-25-1.5 (1 1/2")	MTAD- 252835-SL (Skyline) MTAD- 252835-RS (R-Series)	MTDCB- CHARGE	21-1/2" 22"
25mm DCRF MTDCRF25-1.1	9.74/1.1	1 1/4" (32mm) 1 1/2" (38mm)	MTCRDR-25-1.25 (1 1/4") MTCRDR-25-1.5 (1 1/2")	MTAD- 252835-SL (Skyline) MTAD- 252835-RS (R-Series)	MTDCPS- 28-35-45	15-1/2" 16-1/4"
25mm DCRF Battery MTDCBRF25-1.1	9.74/1.1	1 1/4" (32mm) 1 1/2" (38mm)	MTCRDR-25-1.25 (1 1/4") MTCRDR-25-1.5 (1 1/2")	MTAD- 252835-SL (Skyline) MTAD- 252835-RS (R-Series)	MTDCB- CHARGE	21-1/2" 22"
28mm DCRF Quiet MTDCRFQ28-2	17.7/2.0	1 1/2" (38mm) S-45 (Med) 2" (50mm)	MTCRDR-28-1.5 (1-1/2") MTCRDR-28-S45 MTCRDR-28-2 (2")	MTAD- 252835-SL (Skyline) MTAD- 252835-RS (R-Series)	MTDCPS- 28-35-45	21-5/8" 22-1/2"
28mm DCRF Quiet Battery MTDCBRFQ28-2	17.7/2.0	1 1/2" (38mm) S-45 (Med) 2" (50mm)	MTCRDR-28-1.5 (1 1/2") MTCRDR-28-S45 MTCRDR-28-2 (2")	MTAD- 252835-SL (Skyline) MTAD- 252835-RS (R-Series)	MTDCB- CHARGE	29-1/2" 30-7/8"
35mm DCRF MTDCRF35-3	26.6/3.0	S-45 (Med) 2" (50mm)	MTCRDR-35-S45 MTCRDR-35-2 (2")	MTAD- 252835-SL (Skyline) MTAD- 252835-RS (R-Series)	MTDCPS- 28-35-45	23-5/8" 23"
35mm DCRF Battery MTDCBRF35-3	26.6/3.0	S-45 (Med) 2" (50mm)	MTCRDR-35-S45 MTCRDR-35-2 (2")	MTAD- 252835-SL (Skyline) MTAD- 252835-RS (R-Series)	MTDCB- CHARGE	31-1/8" 30-1/2"
45mm DCRF Quiet MTDCRFQ45-3	26.6/3.0	2" Smooth (50mm) 2 1/2" (63mm) 3 1/4" (83mm)	MTCRDR-45-2SW (2" SW) MTCRDR-45-2.5 (2 1/2") MTCRDR-45-3.25 (3 1/4")	MTAD-45-SL (Skyline) MTAD-45-RS (R-Series)	MTDCPS- 28-35-45	33-3/8" 32-7/8"
45mm DCRF MTDCRF45-10	85.5/10	2" Smooth (50mm) 2 1/2" (63mm) 3 1/4" (83mm)	MTCRDR-45-2SW (2" SW) MTCRDR-45-2.5 (2 1/2") MTCRDR-45-3.25 (3 1/4")	MTAD-45-SL (Skyline)	MTDCPS- 28-35-45	33-1/2" 32-7/8"
45mm DCRF Quiet Battery MTDCBRFQ45-3	26.6/3.0	2" Smooth (50mm) 2 1/2" (63mm) 3 1/4" (83mm)	MTCRDR-45-2SW (2" SW) MTCRDR-45-2.5 (2 1/2") MTCRDR-45-3.25 (3 1/4")	MTAD-45-SL (Skyline) MTAD-45-RS (R-Series)	MTDCB- CHARGE	37-7/8" 37-7/8"
45mm DCRF Battery MTDCBRF45-10	85.5/10	2" Smooth (50mm) 2 1/2" (63mm)	MTCRDR-45-2SW (2" SW) MTCRDR-45-2.5 (2 1/2") MTCRDR-45-3.25 (3 1/4")	MTAD-45-SL (Skyline)	MTDCB- CHARGE	37-7/8" 37-7/8"
25mm DCRF Battery MT01-1325-069002	9.74/1.1	1 1/4" (32mm) 1 1/2" (38mm)	MTCRDR-25-1.25 (1 1/4") MTCRDR-25-1.5 (1 1/2")	MT03-0206-069002 (Skyline) MT03-0205-069002 MT03-0205-069001 (R-Series)	MT03-0301-069008	20-1/2" 21"
28mm DCRF Battery MT01-1328-069001	17.7/2.0	1 1/2" (38mm) S-45 (Med) 2" (50mm)	MTCRDR-28-1.5 (1 1/2") MTCRDR-28-S45 MTCRDR-28-2 (2")	MT03-0206-069002 (Skyline) MT03-0205-069002 MT03-0205-069001 (R-Series)	MT03-0301-069008	28-1/8" 29 7/4"

SECTION B | ROLLERS

7. TORQUE CALCULATOR

1. GO TO: [HTTPS://WWW.ROLLESEACMEDA.COM/US/PRODUCTS/MOTORIZATION](https://www.rollaseacmeda.com/us/products/motorization)
2. CLICK/DOWNLOAD: 'TORQUE CALCULATOR'

Rollease Acmeda Torque Calculator

This document and its content is the property of Rollease Acmeda
This considers torque only and not other system limitations

Calculator Date: 3-Aug-18
Revision: 1.7

LANGUAGE SYSTEM

English (US)
Imperial

Shade 1			Shade 2			Shade 3		
WIDTH	60.0	inch	WIDTH	60.0	inch	WIDTH	0.0	inch
SHADE WEIGHT	5	lb	SHADE WEIGHT	5	lb	SHADE WEIGHT	0	lb
ROLL SIZE	2.2	inch	ROLL SIZE	2.2	inch	ROLL SIZE	0.0	inch
SHADE TORQUE	4	lbf-in	SHADE TORQUE	4	lbf-in	SHADE TORQUE	0	lbf-in
			LINK 1 TORQUE	4	lbf-in	LINK 2 TORQUE	0	lbf-in

SELECT CONFIGURATIONS		
DROP	80.0	inch
FABRIC	Phifer, SheerWeave Style 7100	
WEIGHT	19.8	oz/yd ²
THICKNESS	0.02	inch
HEM BAR	HB16	
BALLAST	NONE	
PRE-WRAP	No	
Tube	1.5" (38mm) Tube	

INPUT FOLLOWING CUSTOM PARTS, IF REQUIRED		
FABRIC		
WEIGHT	450.0	oz/yd ²
THICKNESS	0.50	inch
HEM BAR	0.38	lb/yd
BALLAST	0.20	lb/yd

SYSTEM SUMMARY			
CONTROL TORQUE REQUIREMENT	1.0	Nm	9 lbf-in
TOTAL SHADE WEIGHT	11	lb	
LINK TORQUE REQUIREMENT	0.5	Nm	4 lbf-in

COMPATIBLE CLUTCH

- SL15
- SL20
- SL30
- RGALH
- R16
- R24

COMPATIBLE MOTOR

- MTDCRF25-1.1
- MTDCBRF25-1.1
- MTDCRFQ28-2
- MTDCBRFQ28-2

COMPATIBLE LINK SYSTEM

- EASY-LINK SKYLINE
- EASY-LINK
- EASY-LINK UNI-JOINT
- INFINITE LINK SYSTEM

SECTION B | ROLLERS

8. KNOWN RETROFIT-ABLE SHADE CHART

	Shade Type		Min Size - Width Tube	Max Size - Width	Max Height	Motor Size	Min Tube	Notes
Custom Brands Group	Roller		21"-60"			1.1	1.25	
Custom Brands Group	Roller		27"	120	120	2.0	1.5-2.0	
Custom Brands Group	Roller		36"	120	120	3.0	2.0	
Custom Brands Group	Roller		36"	144	144	Q3.0	2.0	
Custom Brands Group	Roller		36"	168	168	Q10	2.0	
Custom Brands Group	Cordless Cellular	End Mount	24"	See Chart		CL 0.6	N/A	6" In
Custom Brands Group	Cordless Cellular	Center Mount	24"	See Chart		CL 0.8	N/A	8" Between Ladders
Custom Brands Group	Horizontal	Tilt Only	18"	102"	96"	VT 1.0 Tilt	N/A	6" In
Custom Brands Group	Window Shading		24"	120"	102"	1.1-2.0	1.5	
Custom Brands Group	Dual Shade		24"	96	96	1.1	1.5	
Custom Brands Group	Dual Shade		28"	120	120	2.0	1.5	

Springs Window Fashions	Roller - Clutch		24"	96	96	1.1	1.25	
Springs Window Fashions	Roller - Smart Pull		28"	120	120	2.0	1.5	
Springs Window Fashions	Roller - Clutch		36"	144	144	3.0	2.0	
Springs Window Fashions	Roller - Clutch		36"	168	168	Q10	2.0	
Springs Window Fashions	Cordless Cellular	End Mount	15"	See Chart		CL 0.6	N/A	6" in required
Springs Window Fashions	Cordless Cellular	Center Mount		See Chart		CL 0.8	N/A	8" Between Ladders
Springs Window Fashions	Horizontal		18"	102"	96"	VT 1.0 Tilt	N/A	6" in required
Springs Window Fashions	Roman - CCL/Cordless	End Mount	18" Min Headrail	18"	86"	CL0.6	N/A	6" required
Springs Window Fashions	Roman - Cordless/CCL	Center Mount	24" Min Headrail	18"	86" - 96"	CL0.8	N/A	8" Between Ladders

Lafayette Interior Fashions	Roller - Clutch		24"	96	96	1.1		
Lafayette Interior Fashions	Roller		28"	120	120	2		
Lafayette Interior Fashions	Roller		36"	144	144	3.0		
Lafayette Interior Fashions	Roller		36"	144	144	Q3		
Lafayette Interior Fashions	Roller		36"	168	168	Q10		
Lafayette Interior Fashions	Cordless Cellular	End Mount	24"	See Chart		CL0.6	N/A	6"
Lafayette Interior Fashions	Cordless Cellular	Center Mount	24"	See Chart		CL0.8	N/A	8" Between Ladders
Lafayette Interior Fashions	Horizontal	Tilt Only	18"	102"	96"	VT 1.0 Tilt	N/A	6" in
Lafayette Interior Fashions	Tenera		24"	120"	102"	1.1 - 2.0	1.5	
Lafayette Interior Fashions	Illusions		24"	96"	96	1.1	1.5	
Lafayette Interior Fashions	Illusions		28"	120	120	2.0	1.5	
Lafayette Interior Fashions	Roman Shade		24"	96	96	1.1		Must be Quick Lift Clutch
Lafayette Interior Fashions	Roman Shade		28"	120	120	2.0		Must be Quick Lift Clutch

Phase II	Roller Shade	Premium CCO Only	24"	96	96	1.1	1.25	Must be Alum Tube 1.25">
Phase II	Roller Shade	Premium CCO Only	28"	120	120	2.0	1.5	Must be Alum Tube 1.5">
Phase II	Roller Shade	Premium CCO Only	36"	144	144	3.0	2.0	Must be Alum Tube 2.0">
Phase II	Roller Shade	CCL/Chain Operation	24"	96	96	1.1	1.25	Must be Alum Tube 1.25">
Phase II	Roller Shade	CCL/Chain Operation	28"	115	120	2.0	1.5	Must be Alum Tube 2.0">

Timber Blind Metro Shade	Roller Shade	Beaded Chain	24"	96	96	1.1	1.25	
Timber Blind Metro Shade	Roller Shade	Beaded Chain	28"	120	96	2.0	1.5	
Timber Blind Metro Shade	Roller Shade	Beaded Chain	36"	144	192	3.0	2.0	

9. RETROFIT IMPLEMENTATION

THIS IS A GENERAL 'HOW TO' GUIDE, PLEASE SEE SHADE SPECIFIC GUIDES FOR GREATER DETAIL

ROLLER/ROMAN/CASSETTE (TUBULAR MOTOR)

- a. Prep Motor
 - Install Crown and Drive
 - Install Bracket Adapter
- b. Prep Shade
 - Remove Shade
 - Remove Clutch
- c. Install Motor
 - Ensure grooves are lined up
- d. Hang shade
- e. Program Motor

10. SHADE RETROFITTING USING 12V MOTOR

Motor Part Number: MTDCBRF25-1.1

Motor Description: 1.125mm 1.1 Nm Li-on Motor, Skyline 1.25 or

Motor Part Number: MTDCBRFQ28-2

Motor Description: : 1.5 Tube 28mm 2.0 Nm li-on Motor 1.5 or Larger Tube

Tools needed:

1. #2 Phillips head screwdriver
2. Wide blade flat head screwdriver

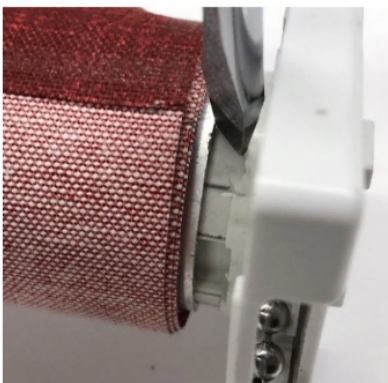


Preparing for the retrofit:

1. Removing the clutch system:
 - Locate the clutch side



- With a wide blade flat head screw driver separate the clutch from the tube by twisting the screwdriver forcing the clutch out of the tube.



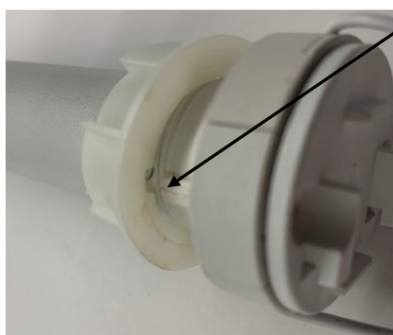
SECTION B | ROLLERS

Prepare the Motor

- Ensure you have the correct Crown & Drive for the motor. 1.25 or 1.5"
- The parts package will indicate 25mm or 28mm 1.25 or 1.5" based on the motor choice.



- Attach the Crown by slipping it over the motor and to the motor head collar.
- On the 25mm make sure the tab lines up with the slot.

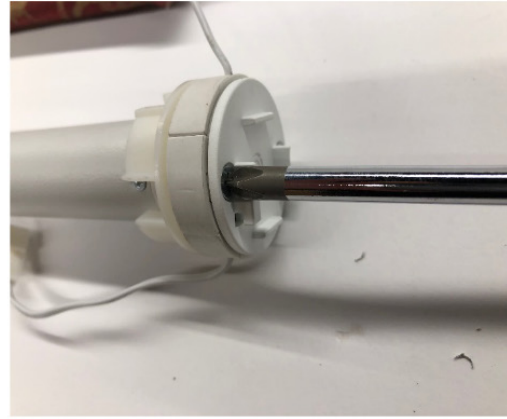
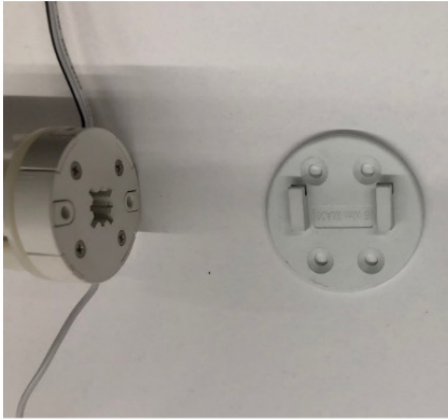


- Attach the drive on the output pin of the motor and secure the retainer clip into the groove in the output pin.



SECTION B | ROLLERS

- Attach the bracket adapter to the motor using the phillips screws provided. Be careful not to overtighten the screws. Attach so the tabs are facing down to fit into the bracket so the antenna is facing up allowing access to the p1 button from the bottom of the motor head.



- Slide the motor drive into the tube ensuring you are using the smaller slot so there is as little play between the tab and slot as possible. Using the larger tab will affect the operation of the shade.



- Slide the motor into the tube until you reach the motor crown and collar. Again, ensure you are using the proper tab so there is as little play as possible.



- Install the shade assembly into the brackets.
- Pair and program motor

11. SHADE RETROFITTING USING 5V MOTOR

Motor Part Number: MT01-1325-069002

Motor Description: AUTOMATE|LI-ION 1.1Nm ARC Motor[Ø25/5V/20rpm](SKY)

Motor Part Number: MT01-1328-069001

Tools needed:

1. #2 Phillips head screwdriver
2. Wide blade flat head screwdriver



Preparing for the retrofit:

- Remove the manual shade from the Bracket
- Removing clutch from the system
- Locate the clutch side
- With a wide blade flat head screwdriver, separate the clutch from the tube by twisting the screwdriver forcing the clutch out of the tube.



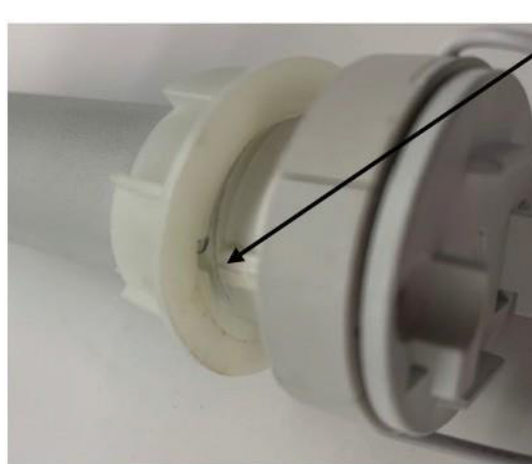
SECTION B | ROLLERS

Prepare the Motor

- Ensure you have the correct Crown & Drive for the motor - 1.5"
- The parts package will indicate 25mm 1.5" based on the motor choice



- Attach the Crown by slipping it over the motor and to the motor head collar
- On the 25mm make sure the tab lines up with the slot

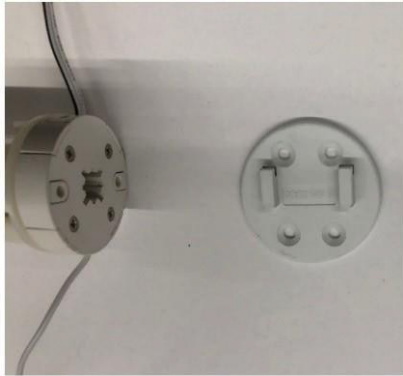


- Attach the drive on the output pin of the motor and secure the retainer clip into the groove in the output pin



SECTION B | ROLLERS

- Attach the bracket adapter to the motor using the Philips screws provided. Be careful not to overtighten the screws. Attach so the tabs are facing down to fit into the bracket so the antenna is facing up allowing access to the p1 button from the bottom of the motor head.



- Slide the motor drive into the tube ensuring you are using the smaller slot so there is as little play between the tab and slot as possible. Using the larger tab will affect the operation of the shade



- Slide the motor into the tube until you reach the motor crown and collar. Again, ensure you are using the proper tab so there is as little play as possible.



- Install the shade assembly into the brackets.
- Pair and program motor.

NOTES

A series of horizontal dotted lines for taking notes.



AUTOMATE™

A DIVISION OF **ROLLEASE ACMEDA**

FOLLOW US



Follow Rollease Acmeda on social media with:
[@ROLLEASEACMEDA](#)

© 2021 Copyright Rollease Acmeda Group