

AUTOMATE™

ACML Q10

Convenient installation. Hard wired. Mechanical limits.
The AC motor can seamlessly integrate within any Smart Home Automation system and in a commercial situation is the most economical solution.



COST EFFECTIVE

Economical solution in commercial environments where numerous motors are required. Reduce installation and maintenance costs.



INTEGRATION FLEXIBILITY

Motors can be incorporated into any home automation system, irrespective of the brand.



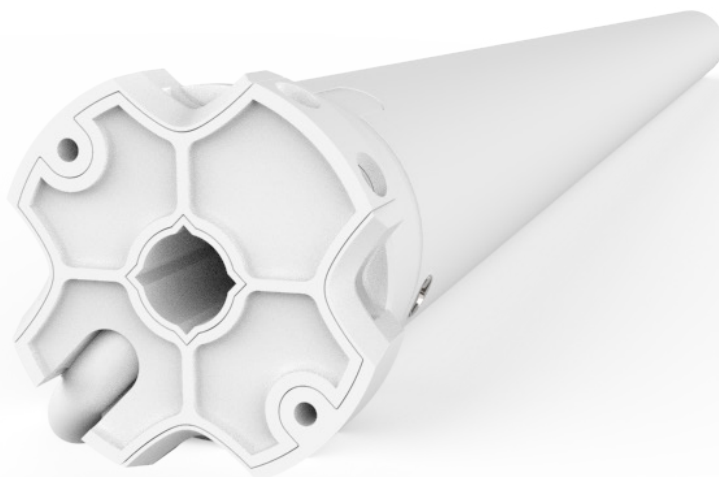
SIMPLIFIED SETUP

Automate programming instructions are streamlined to have your shades moving as quickly as possible.



RELIABLE OPERATION

No interference from other devices to prevent the motor from operating.



7 YEAR WARRANTY



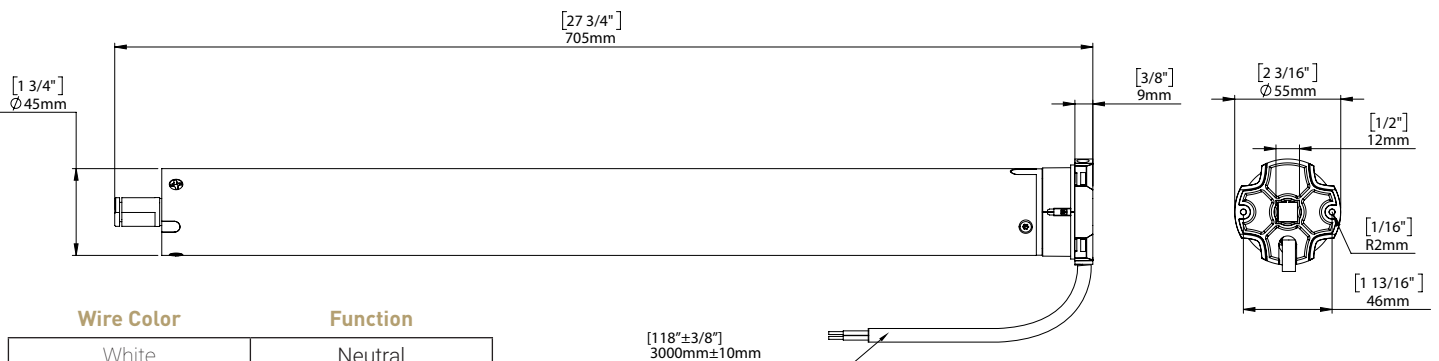
ARC™ (Automate Radio Communication) is Rollease Acmeda's proprietary technology utilizing 433MHz radio communication with bi-directional feedback that brings Automate motorized shading systems together.

PRODUCT SPECIFICATIONS

Part #: MTACQML-10-M Quiet 45mm AC Tubular motor with mechanical limits.

Voltage	120V A/C	IP Rating	IP44
Torque	10.0Nm	Limit Switch Type	Mechanical
Max Run Time	4 min	Current	1A
Speed	21 RPM	Temp Working Range	32°F to 140°F (0°C to 60°C)
Sound Level	~42 dB	Insulation Class	I

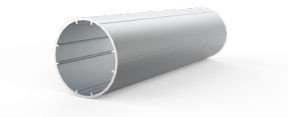
DIMENSIONS



Wire Color	Function
White	Neutral
Black	Direction 1
Red	Direction 2
Green	Ground

COMPATIBLE PARTS

Tubes



Crown & Drives



Adaptors



2" Ribbed Tube	MTCRDR-45-2SW
2-1/2"	MTCRDR-45-2.5
3-1/4"	MTCRDR-45-3.25
S60	MTCRDR-45-S60
S80	MTCRDR-45-S80

- MTAD-45-SL

COMPATIBLE SYSTEMS

- Skyline Shades
- S60 Shades
- Silent Pin
- 5x5