

# AUTOMATE™

## CL 0.6 Cord Lift

Cord lift technology. Low voltage. 3 speed settings.  
The CL motor can provide continuous power and its simplified wiring solution is directly compatible with cellular shades.



### BIDIRECTIONAL COMMUNICATION

Automate Radio Communication utilizes two-way communication to provide up-to-date feedback on battery levels and shade positioning via the Automate Pulse 2 app.



### INTERCHANGEABLE POWER SOURCE

Choose to have your shades hard wired for continuous power or opt for a wire-free setup – choose from a rechargeable battery pack or a tube that holds AA batteries.



### FAVORITE POSITIONING

Add a programmable shade position in addition to the upper and lower limits that can be defined as your "favorite."



### SIMPLIFIED SETUP

Whether using a remote control or app for shade setup, Automate programming instructions are streamlined to have your shades moving as quickly as possible.



### PRECISE LIMIT ADJUSTMENT

Incremental steps during limit setting allows for precise positioning of the shade.



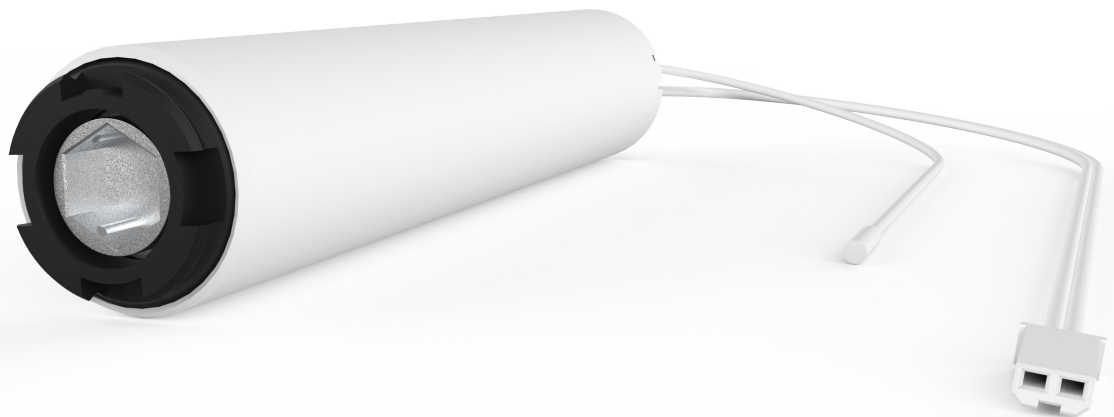
### BATTERY CHECK ACTION

When paired with Push5 remote, motor will move shade to indicate battery percentage.



### ELEGANT SOFT STOP

Slows the motor down for a smooth stop to prevent damage to the shade, and preserves the life of the battery.



**7** YEAR WARRANTY



ARC™ (Automate Radio Communication) is Rollease Acmeda's proprietary technology utilizing 433MHz radio communication with bi-directional feedback that brings Automate motorized shading systems together.

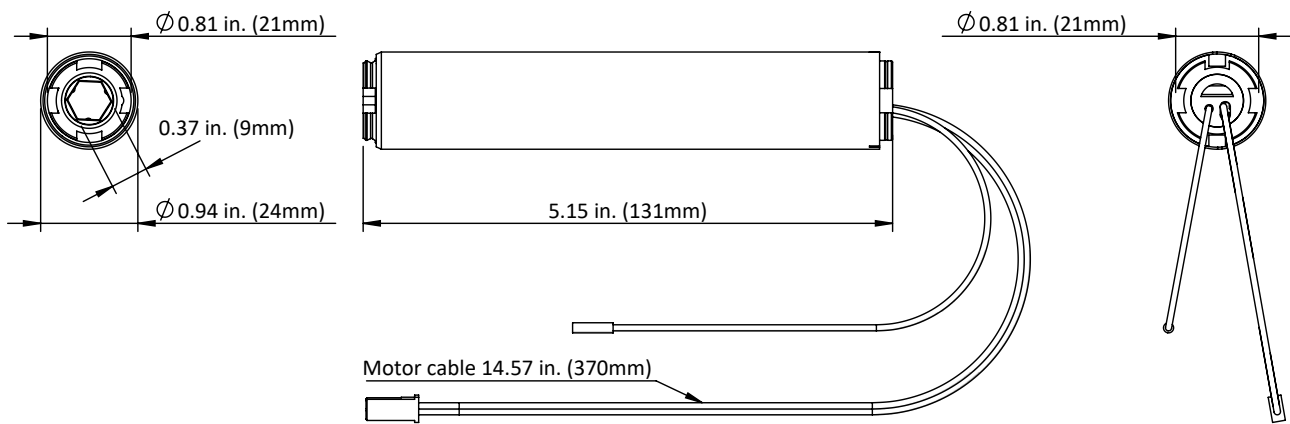
A Division of Rollease Acmeda

# PRODUCT SPECIFICATIONS

Part #: MTDCRF-CL-0.6-50 Cord Lift 0.6 Nm Motor

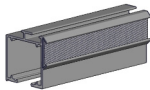
<b>Voltage</b>	12V DC	<b>Limit Switch Type</b>	Electronic
<b>Torque</b>	0.6 Nm	<b>Current</b>	1.0 A
<b>Max Run Time</b>	12 min	<b>Battery Size/Type</b>	External Battery Pack
<b>Speed</b>	50 RPM (Adjustable to 42 or 34)	<b>Temp Working Range</b>	32°F to 140°F (0°C to 60°C)
<b>Radio Frequency</b>	433.92 MHz	<b>Insulation Class</b>	I.CL.B
<b>RF Modulation</b>	FSK	<b>Sound Level</b>	48dB
<b>IP Rating</b>	IP20	<b>Power</b>	12W

## DIMENSIONS

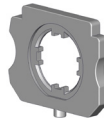


## COMPATIBLE PARTS

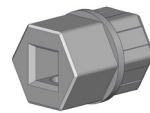
### Systems



### Motor Adaptors



### Shaft Adaptors



BTG Headrail	MTAD-CLHR-BTGC	MTAD-CLSA-4MMSQ
Turnils Headrail	MTAD-CLHR-TUR	MTAD-CLSA-V
SS38 Headrail	MTAD-CLHRSS38KT	-
-	MTAD-CLHR_US-ROM	MTAD-CLSA-D
-	-	MTAD-CLSA-5mmSQ

## COMPATIBLE PRODUCTS (refer to catalog for full item listings)

### Controllers



Pulse HUB & App



Push 5 remotes

### Power Options



Power Supply



Battery Pack