

S35 AUTOMATE 0.5Nm | 20mm

The motorized 20mm 0.5Nm roller shade system offers two Automate motors to suit a variety of applications. Featuring ARC (Automate Radio Communication), the motorized 20mm 0.5Nm Automate system provides an intelligent, Li-ion battery powered solution.

AESTHETICAL FEATURES

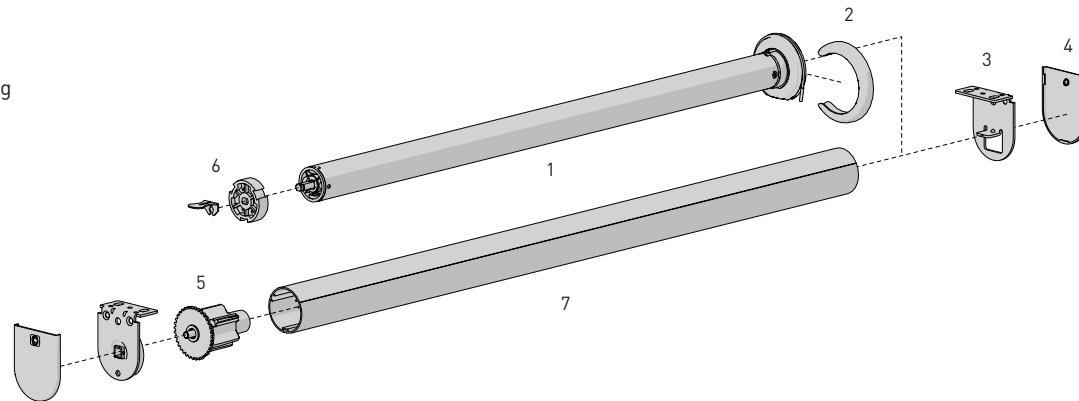
- Slim motor head for minimal light gap
- Motor cap to color match with brackets

PRODUCTION & ASSEMBLY FEATURES

- Greater flexibility with installation with extendable pin end
- Crown, drive and adaptors available to suit multiple tube sizes

FUNCTIONAL BENEFITS

- 5V Micro USB Charging
- Antenna Wire Retention Feature
- Levelling control
- Simple limit setting and adjustment
- Favorite position
- 3 operational speed settings
- 2-WAY RF communication
- ARC protocol for simple programming



SYSTEM INDEX

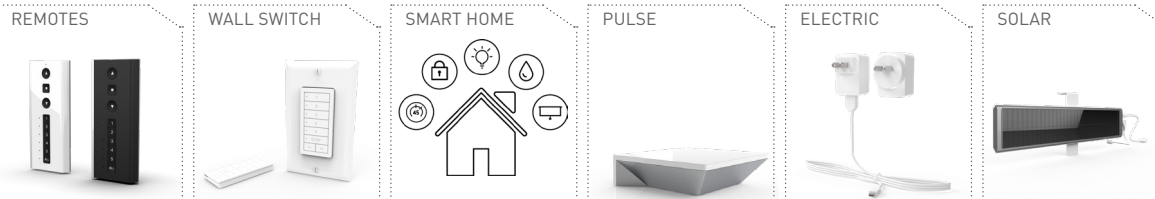
1	Automate Motor 25mm MT01-1320-069002 - Li-ion 0.5Nm ZERO 5V (S45)
2	Motor Cap MT03-0502-027001 - Chrome MT03-0502-034001 - Satin Nickle MT03-0502-043001 - Brass MT03-0502-059001 - Black MT03-0502-077001 - White MT03-0502-079001 - Antique Bronze MT03-0502-091001 - Gun Metal
3	Brackets RB08-8346-069030 - Easy-Lock LX S35
4	Bracket Covers RB08-4141-xxx030 - VX/LX S35
5	Pin End RB08-0501-xxx034 - Easy-Lock AC Auto Idler S35
6	Crown & Drive Set 20mm MT03-0110-069009 - 25mm Crown/Drive Adaptor MT03-0110-069010 - S35 Tube MT03-0110-069011 - Louvalite 32mm MT03-0110-069002 - Louvalite 38mm MT03-0110-069013 - Louvalite 38mm (25mm Adaptor)
7	S35 T-Spline Aluminum Tubes RB93-X444-000580 - Standard RB93-X449-000580 - Heavy Duty

= Size
xxx = Color
X = catalogue options

COLOUR RANGE



CONTROL OPTIONS



CHARGERS

OPTIONS

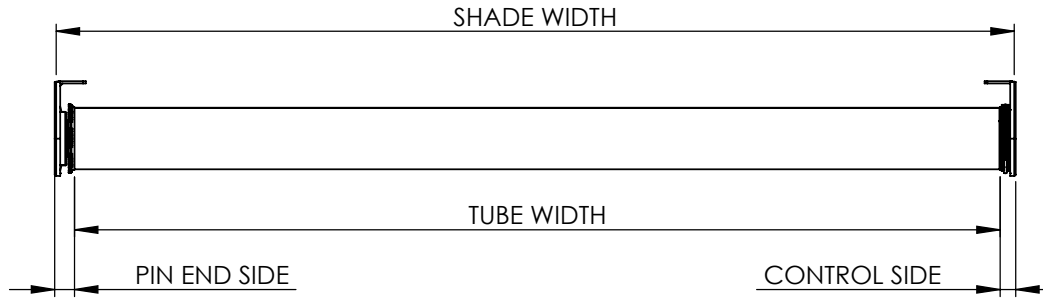
SYSTEM UPGRADES

- PELMET 95
- EASY-LINK
- CF90
- MOUNTING RAIL



SPECIFICATIONS

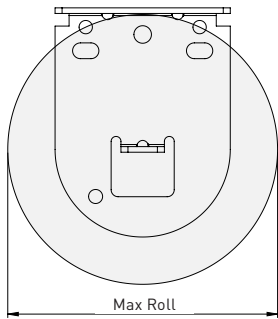
DEDUCTION CHART



MOTOR	MINIMUM SHADE WIDTH
MT01-1320-069002	22" [558mm]

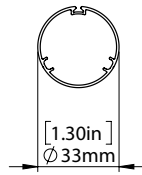
MOTOR	BRACKETS	LIGHT GAP		TUBE DEDUCTION
		CONTROL END	PIN END	
MT01-1320-069002	With Covers	7/16" [11mm]	1/2" [13mm]	15/16" [24mm]
	No Covers	1/2" [13mm]	9/16" [14mm]	1-1/6" [27mm]

MAX ROLL



BRACKET	MAX ROLL SIZE
RB08-8346-069030	2-3/16" [56mm]

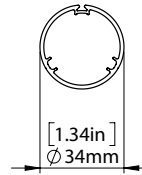
TUBE SPECS.



S35 STD Tube

Code RB93-0333-000580
w. tape RB93-6333-000580

Length 19' [5.8m]



S35 HD Tube

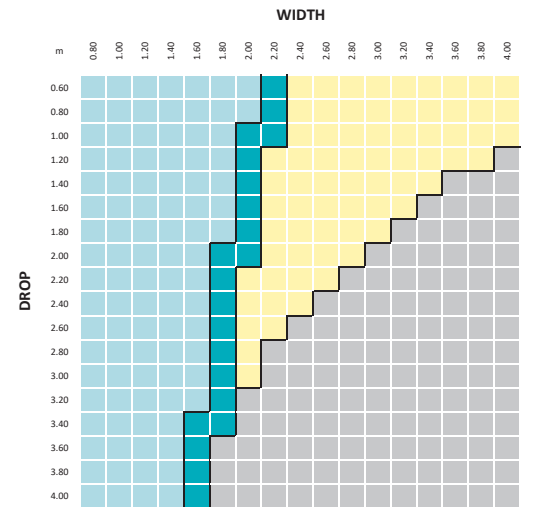
Code RB93-0335-000580
w. tape RB93-6335-000580

Length 19' [5.8m]

MOTOR	MAX LIFTING CAPACITY		MAX DROP**
	S35 STD	S35 HD	S35
0.5Nm	6.8lbs [3.1kg]	6.6lbs [3.0kg]	13.1' [4m]

Exceeding these value may cause fabric tracking issues

SYSTEM CAPACITY



TUBES		PARAMETERS:
S35 STANDARD		FABRIC DENSITY: 390gsm
S35 HEAVY DUTY		FABRIC THICKNESS: 0.6mm
LINKED		WEIGHT BAR: D30 Bottom Rail
OUTSIDE SYSTEM CAPACITY		TUBE DEFLECTION: 1.05mm/m