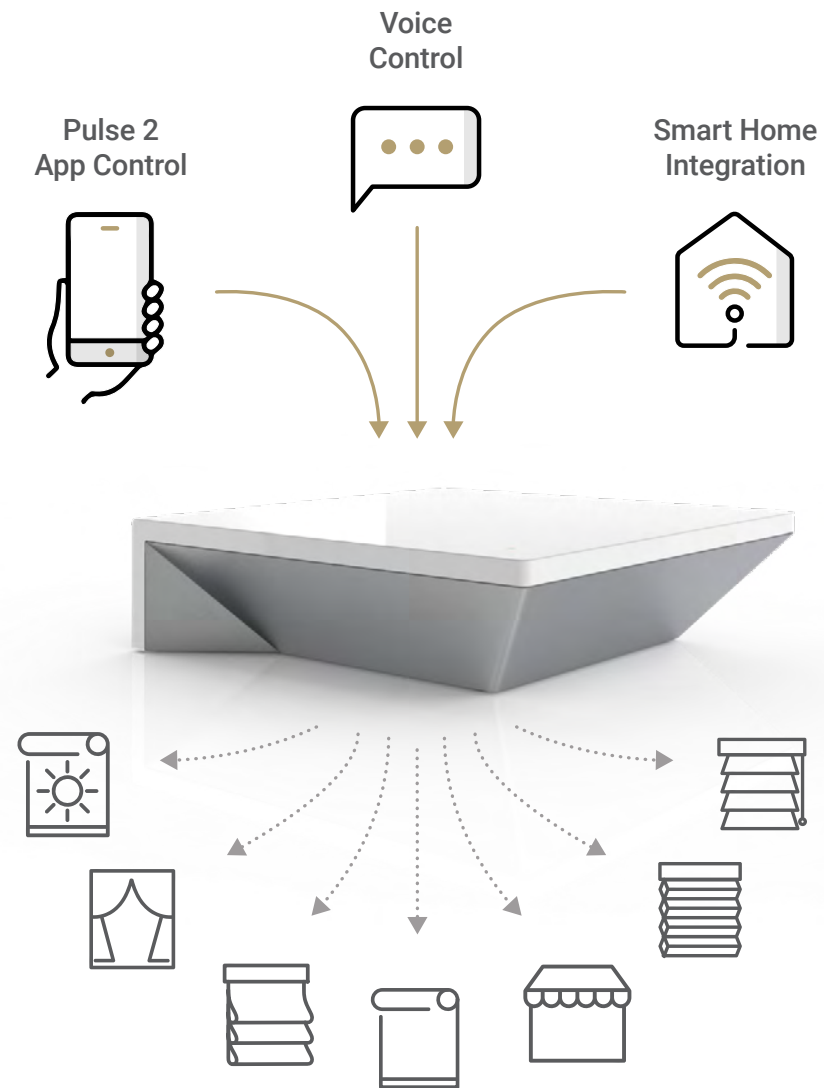


AUTOMATE™

Pulse 2 Hub



Pulse 2 Hub



The heart of your smart shades

Unlock the hidden potential of your home and experience the convenience of smarter shades with the Automate Pulse 2 Hub.

Paired with the Automate app installed on your smart device, the Pulse 2 centralizes control of your shades to the tip of your finger or the sound of your voice. When connected to the Hub, your ARC shade motors can be automated or manually adjusted whenever you please – from home or away.

Automate Radio Communication

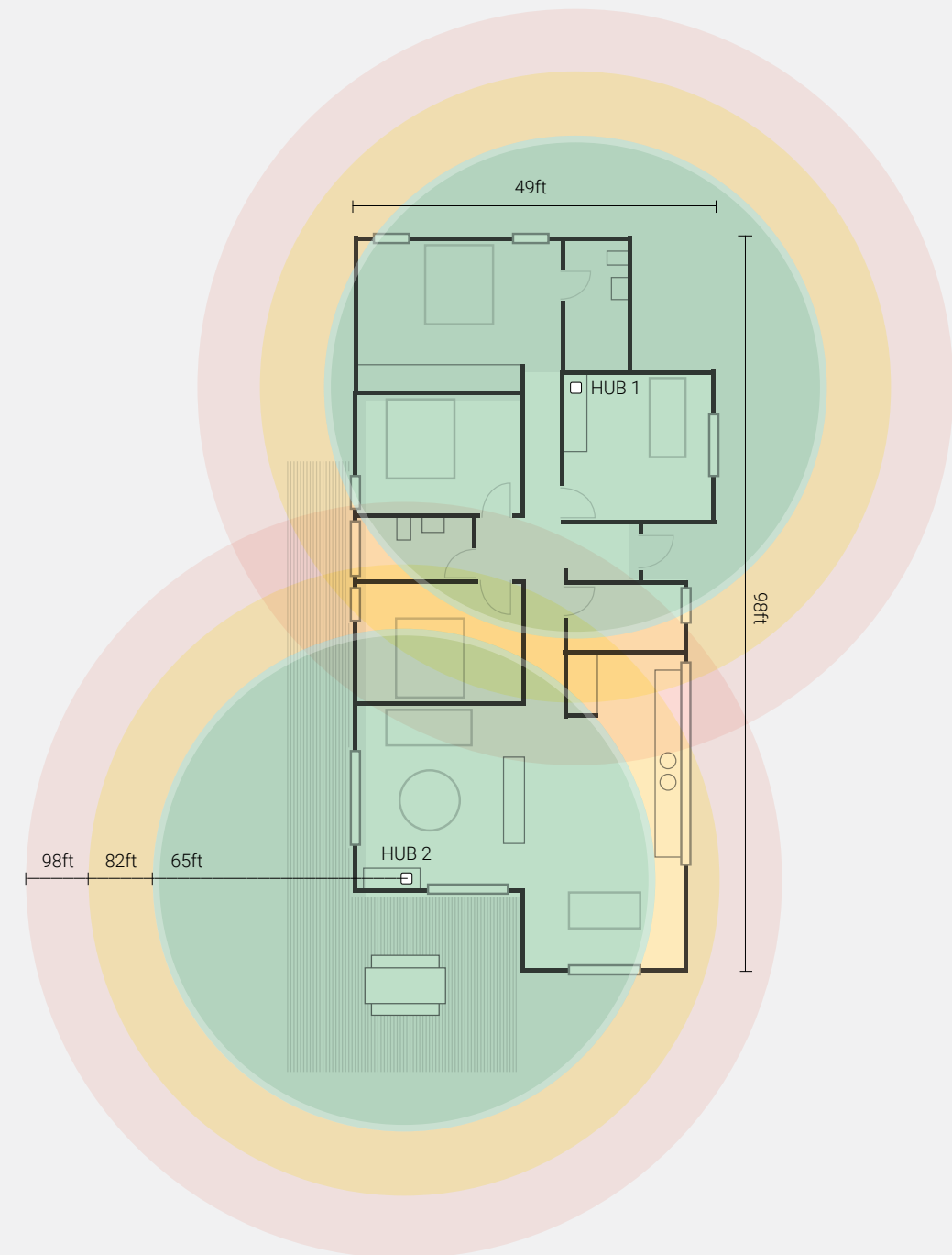


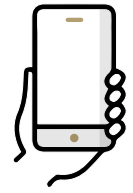
Powered by our proprietary communication technology, ARC enables an intuitive bi-directional signal, engineered to deliver a more reliable connection and better communication between your motor and control device.

How do I set-up the Pulse 2 Hub in my home?

Pulse 2 is a wireless controller for all motorized shades in your home with a range of up to 98 feet.

For an average sized 4 bedroom single-level home we suggest a 2 hub set-up for uninterrupted coverage. If you have a second story it is recommended to install an additional hub on this floor to ensure a consistent signal is sent to all your motorized shades.





Pulse 2 Hub Control Options

Pulse 2 App



Simple and sophisticated smart phone control

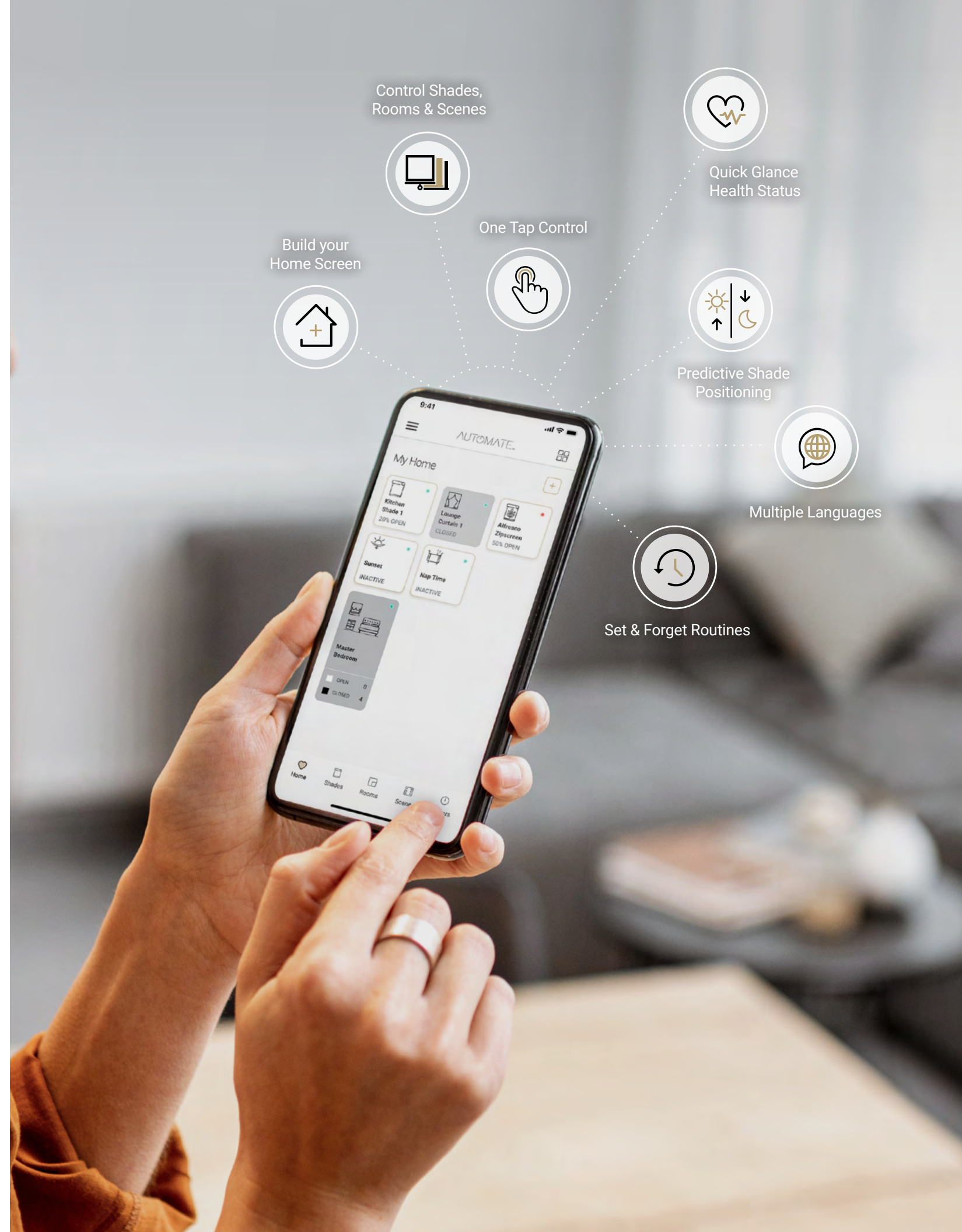
Using the Automate app, you are in complete control of your smart shades; personalize daily routines, organize and group your shades and automate your window coverings with Automate Scenes and Timers.

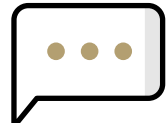
The Pulse 2 allows your shades to adapt to your day and move with your climate, schedule, and preference, completely autonomously.

Simply set your preferred daily routines and watch your shades do the rest. Automate shades can also shift with the movement of the sun, with the built-in sunrise/sunset feature, ensuring optimal, automatic sunlight and privacy control.

Use timers to harness natural sunlight

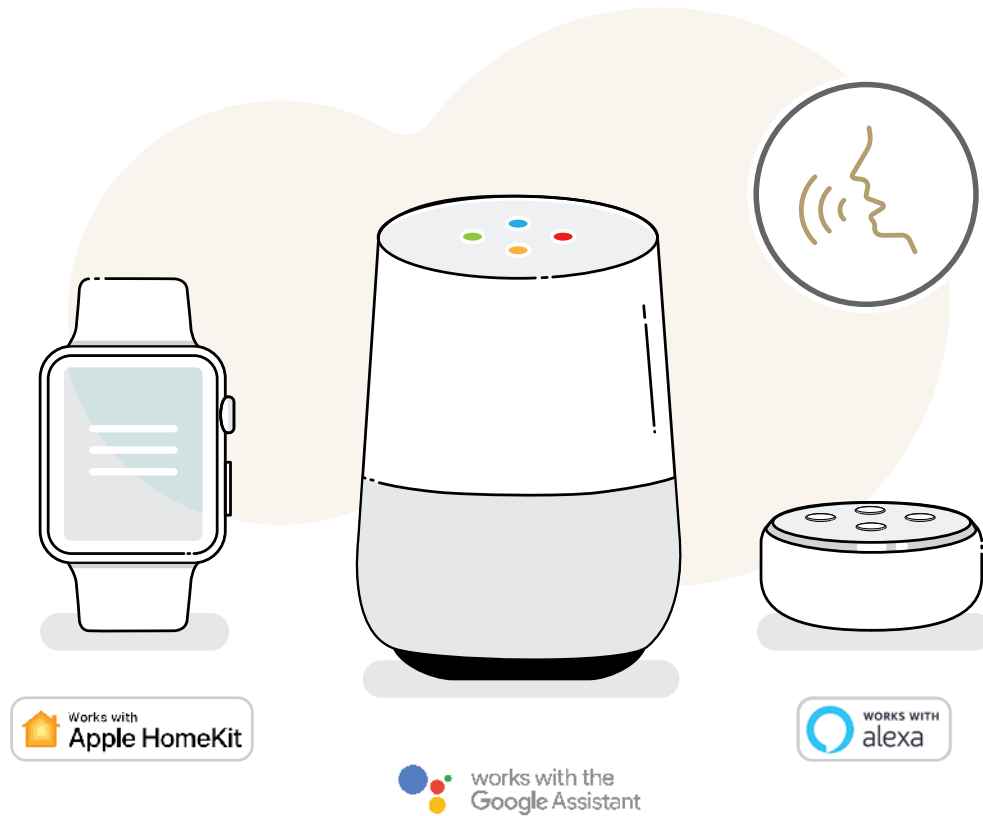
Set up multiple subsequent timers to gradually raise the shades and let the right amount of sunlight in to wake you up naturally in the morning.





Pulse 2 Hub Control Options

Voice Control



Shades that listen

When paired to the Automate Pulse 2, your voice is all you need to control your Automate shades. Take advantage of Siri, Google Assistant or Alexa across any device, and operate your shades with naturally spoken voice commands.

Your smart assistants can understand you better than ever. "Close the shades a little" or "Raise the kitchen shades" is all that's needed for your smart shades to move the way you want them to.

Control your shades individually or by groups, activate scenes, or simply set the shades to your desired height, all with the power of your voice.

Live feedback

Live feedback allows you to quickly check shade position and battery levels by simply asking your voice assistants to check for you.



- Hey Siri, Open kitchen shades
- Hey Siri, Close blinds
- Hey Siri, move the shades a little
- Hey Siri, What's the shades battery level?



Pulse 2 Hub Control Options

Smart Home Integration

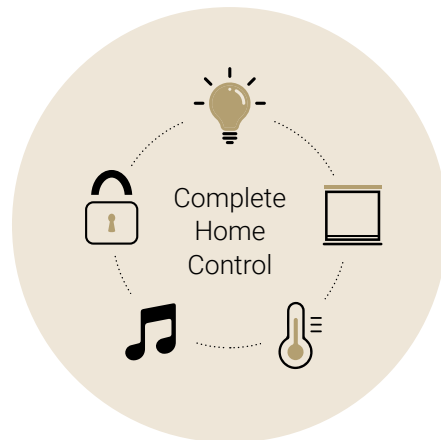


Your smart devices working together

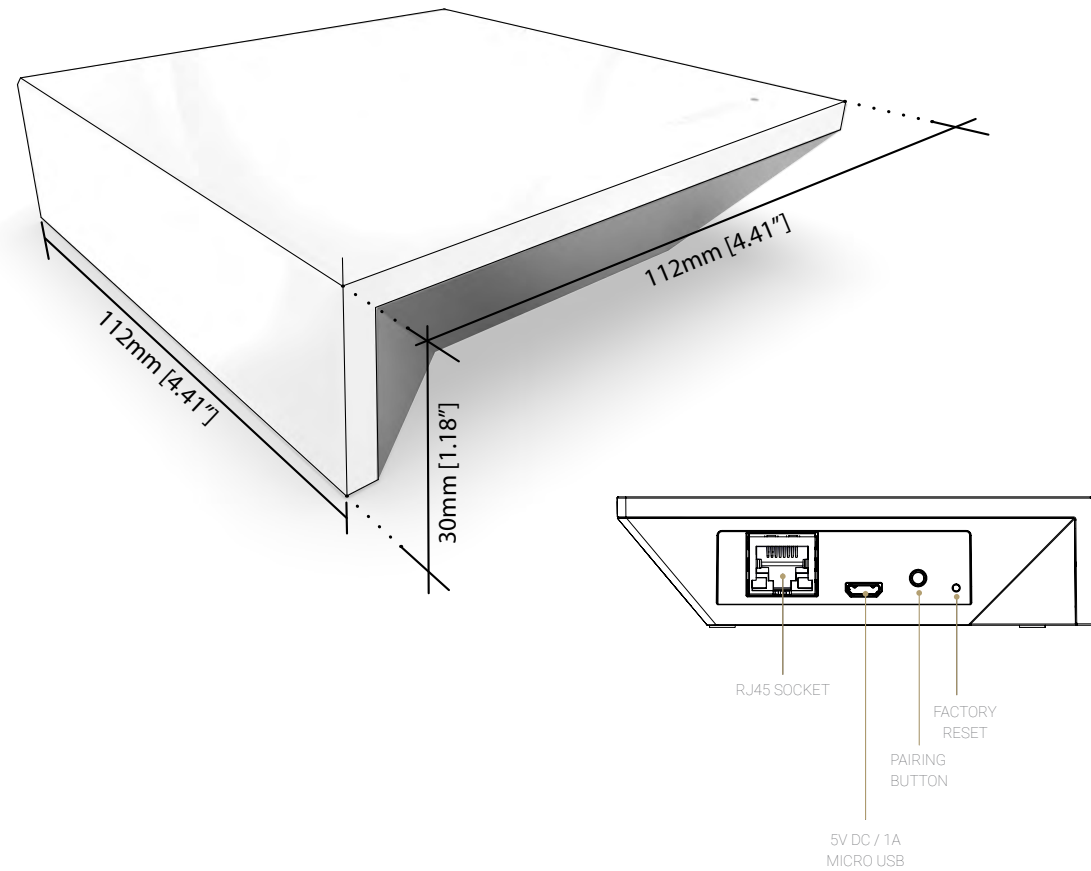
Achieve effortless control of your Automate smart window coverings and seamless integration with home automation systems for a feature-rich smart home solution. Easily control your Automate smarter shades in conjunction with your home's other smart devices including; lights, security, thermostats and home entertainment.

The Automate suite is also compatible with IFTTT and Smart things, bringing all your smart devices together through the power of WiFi.

Enjoy effortless smart home control for your shades, and your connected smart devices, all in one place.



Pulse 2 Hub



Your Support Program



Phone Support



Online Programming Assistant



Tech Support Email



Knowledge Base Items



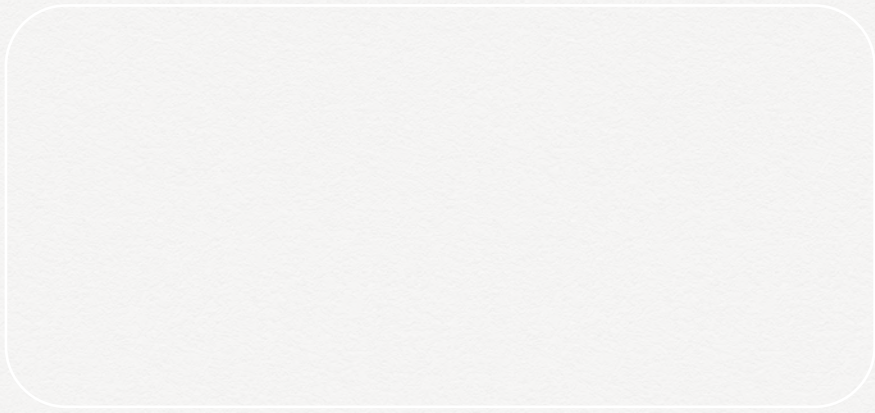
YouTube Videos



Full Doc Listing

Technical Specifications

Input Voltage	5V
Input Power	1000mA
Wi-Fi network	2.4Ghz only
Shade Control Frequency	433.92 MHz
Range	30 metres 98 feet
Protection Class	IP20
Operation Temperature	32°F to 140°F (0°C to 60°C)
Connection	Ethernet and Wifi
USB Cable Length	80cm
Ethernet Cable	100cm
Apple IOS Version	Needs to be 10 or greater
Android Version	Needs to be 6.0 or greater
Devices	Compatible with Smart Phones, Tablets and Smart Watches
Max no. of Hubs & Locations	5 Hubs per Location, 5 Locations per Account
Devices per Hub	30
Rooms per Hub	30
Scenes per Hub	20
Timers per Hub	20
Pulse 2 App Details & Device Compatibility	iOS (Needs to be 10 or greater) Android (Needs to be 6 or greater) Phones Handsets Tablets
Third Party Device Integrations	Voice Control Platforms Apple HomeKit & Siri, Amazon Alexa, Google Assistant Home Automate Systems AMX, Control4, Crestron, ELAN, HomeSeer, RTI, Savant Smart Home Platforms IFTTT Pro & SmartThings
Functions / Controls	Sunrise & Sunset detection Capture Device position to scene Battery Level indicator Signal Strength Indicator Swipe Up & Down controls & buttons Offline Status Indicator
Hub Offline	No Internet or Wifi If your Hub is disconnected from the Internet and the Wifi Router, all timers that are programmed will continue to operate. No Internet but local Wifi If your internet service goes down and the hub is still connected to the Wifi Router, the following functions will still operate – Timer Activation, Activate a Single Device, Operate a Scene, Operate a Room, Shade position Feedback, Shade Battery Feedback, Adjust Limits
Supported Window Coverings	Rollers Awnings Drapes Skylights Cellular External Rollers Romans Venetians



Visit us online at
automateshades.com
for more information
on Pulse 2 Hub.