

R-Series 1.1Nm | 25mm | 12V

The motorized R-Series roller shade system offers two Automate motors for two tube diameters to suit a variety of applications. Featuring ARC (Automate Radio Communication), the 25mm R-Series Automate system provides an intelligent, Li-ion battery, or a DC powered solution.

AESTHETIC FEATURES

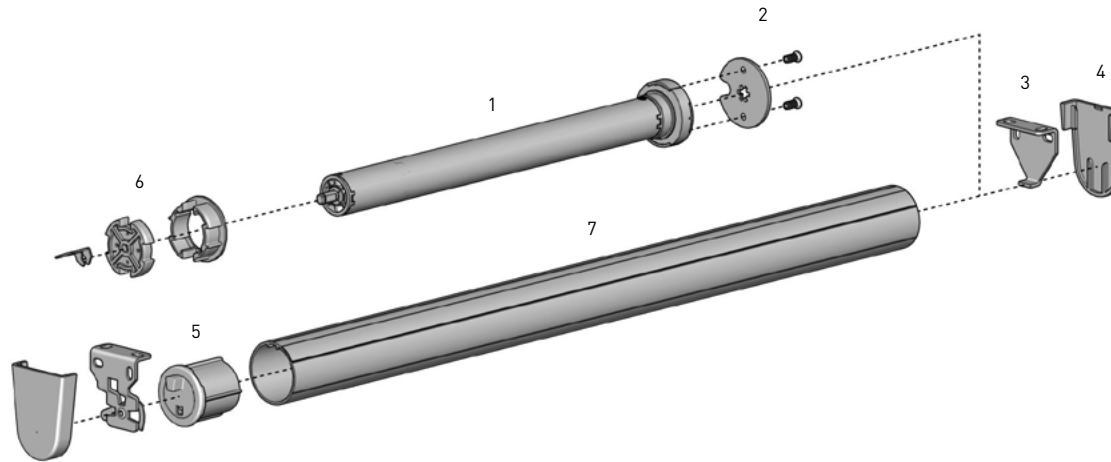
- Slim motor head for minimal light gap

ASSEMBLY / PRODUCTION FEATURES

- Crown, drive and adapters available to suit two tube sizes

FUNCTIONAL BENEFITS

- Leveling control
- Simple limit setting and adjustment
- Favorite position
- 3 operational speed settings
- 2-way RF communication
- ARC protocol for simple programming



SYSTEM INDEX

1	Automate Motor 25mm MTDCBRF25-1.1 - Li-ion 1.1 MTDCRF25-1.1 - DCRF 1.1
2	Motor Adaptor + Screws MTAD-252835-RS + SLAMSCREW
3	Brackets RB360xx - R8 1½" Set RB380xx - R8 2" Set RB390xx - R8 2-⅞" Set
4	Bracket Covers RBPC360xx RBPC380xx
5	Pin End REP03xx - for 1¼" tube REP53xx - for 1½" tube
6	Crown and Drive Kit MTCRDR-25-1.25 - Kit for 1¼" tube MTCRDR-25-1.5 - Kit for 1½" tube
7	Aluminum Tube RTEA3T## - 1¼" tube RTEA4T## - 1½" tube

- Size
xxx= Color

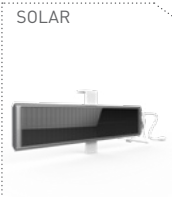
COLOR RANGE



SYSTEM UPGRADES

- CASSETTE 80/100/120
- FASCIA 3"/4"/5"
- LINK SYSTEM
- POCKETS 3"/4"/5"/6"

CONTROL OPTIONS

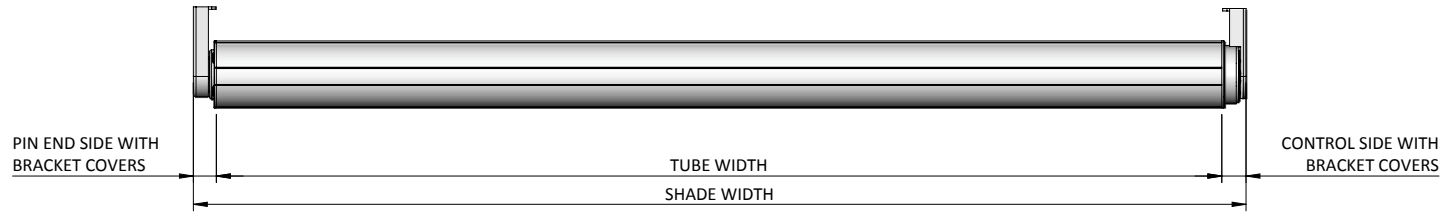


PRODUCT OPTIONS



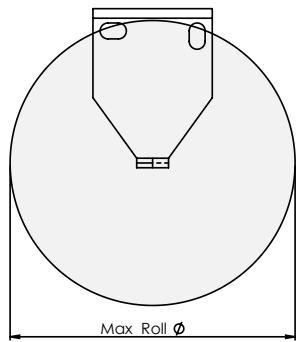
SPECIFICATIONS

DEDUCTION CHART



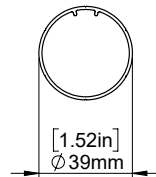
MOTOR	TUBE	BRACKETS	LIGHT GAP			MINIMUM SHADE WIDTH	
			CONTROL END	PIN END	OVERALL		
MTDCBRF25-1.1/ MTDCRF25-1.1	1 1/4"	With Covers	0.75" [19mm]	0.71" [18mm]	1.46" [37mm]	MTDCBRF25-1.1	1.87' [0.570m]
		No Covers	0.67" [17mm]	0.63" [16mm]	1.30" [33mm]		
	1 1/2"	With Covers	0.75" [19mm]	0.67" [17mm]	1.42" [36mm]	MTDCRF25-1.1	1.38' [0.420m]
		No Covers	0.67" [17mm]	0.59" [15mm]	1.26" [32mm]		

MAX ROLL



BRACKET	MAX ROLL SIZE
RB360xx	2.57" [69mm]
RB380xx	3.65" [92mm]
RB390xx	4.00" [101mm]

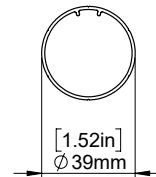
TUBE SPECS.



1 1/4" Tube

Code: RTEA3T12 (with tape)
RTEA3T16 (with tape)

Length 12',16'
(3.66m, 4.88m)



1 1/2" Tube

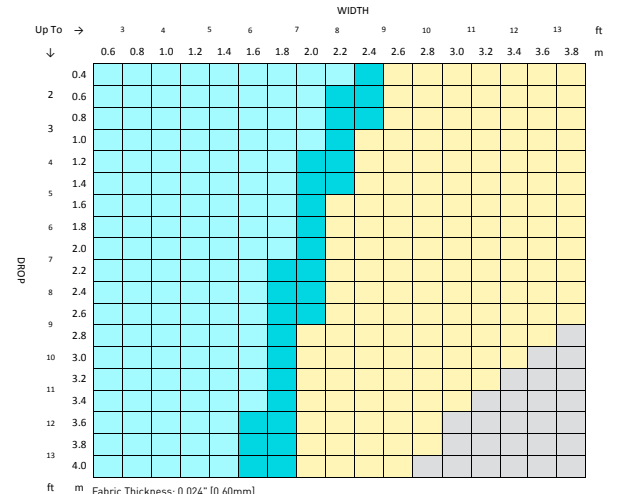
Code: RTEA4T12 (with tape)
RTEA4U12
RTEA4T16 (with tape)
RTEA4U16

Length 12',16'
(3.66m, 4.88m)

1 1/4" TUBE		1 1/2" TUBE	
Ø WIDTH	MAX DROP	Ø WIDTH	MAX DROP
7.22' [2.20m]	1.31' [0.40m]*	7.87' [2.40m]	2.62' [0.80m]*
4.59' [1.40m]	13.12' [4.00m]*	5.91' [1.80m]	13.12' [4.00m]*

* Recommended Max Drop. Exceeding this value may cause fabric tracking issues

SYSTEM CAPACITY



Fabric Thickness: 0.024" [0.60mm]
Fabric Density: 12.39oz/yd² [420gsm]
Weight Bar: D30 Silent Medium Aluminium Bottom Rail

CONTROL	TUBE	LINK SYSTEM
25mm Motor	RTEA3TH - 1.25"	1.5" ONLY
	RTEA4TH - 1.5"	
	OUTSIDE SPECIFICATIONS	