

Skyline 0.2Nm | 18mm | 12V

The motorized Skyline roller shade system offers two Automate motors for two tube diameters to suit a variety of applications. Featuring ARC (Automate Radio Communication), the 18mm Skyline Automate system provides an intelligent Li-ion battery, or a DC powered solution.

**AESTHETIC FEATURES**

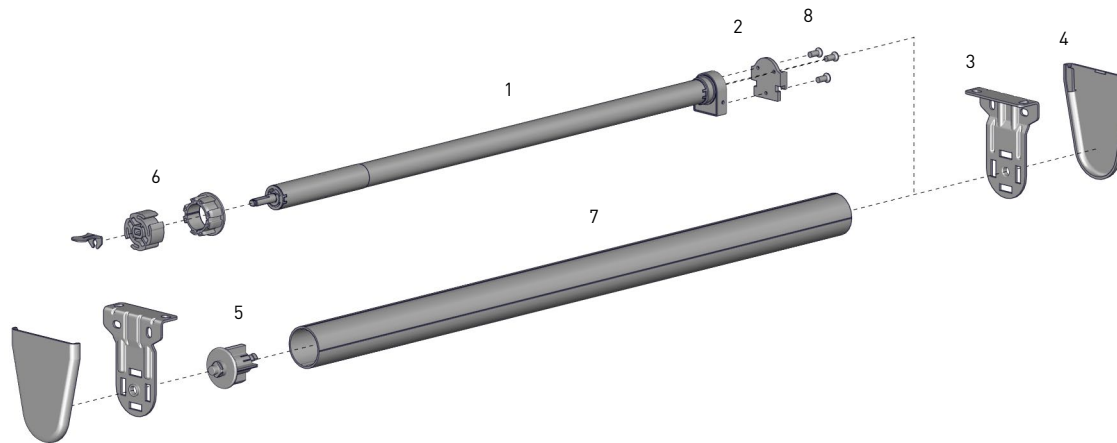
- Slim motor head for minimal light gap

**ASSEMBLY / PRODUCTION FEATURES**

- Greater flexibility with installation with spring loaded pin end
- Crown, drive and adapters available to suit two of tube sizes

**FUNCTIONAL BENEFITS**

- Leveling control
- Simple limit setting and adjustment
- Favorite position
- 3 operational speed settings
- 2-way RF communication
- ARC protocol for simple programming



**SYSTEM INDEX**

1	Automate Motor   18mm MTDCBRF18-0.2 - Li-ion 0.2
2	Motor Adapter MTAD-18-SL
3	Brackets SLB###x SLNB###x
4	Bracket Covers SLBC###x SLNBC###x
5	Pin End SLPEV01 - for 1" Tube SLPEV02 - for 1 1/8" Tube
6	Crown & Drive Kit MTCRDR-18-1 - Kit for 1" Tube MTCRDR-18-1 1/8 - Kit for 1 1/8" Tube
7	Aluminum Tube RTEA1T## - 1" Tube RTEA2T## - 1 1/8" Tube
8	Screws for Adapter SLAMSCREW

# - Size  
xxx= Color

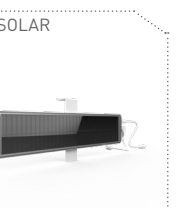
**COLOUR RANGE**



**SYSTEM UPGRADES**

- CASSETTE 80/100/120
- FASCIA 3"/4"/5"
- LINK SYSTEM
- POCKETS 3"/4"/5"/6"

**CONTROL OPTIONS**

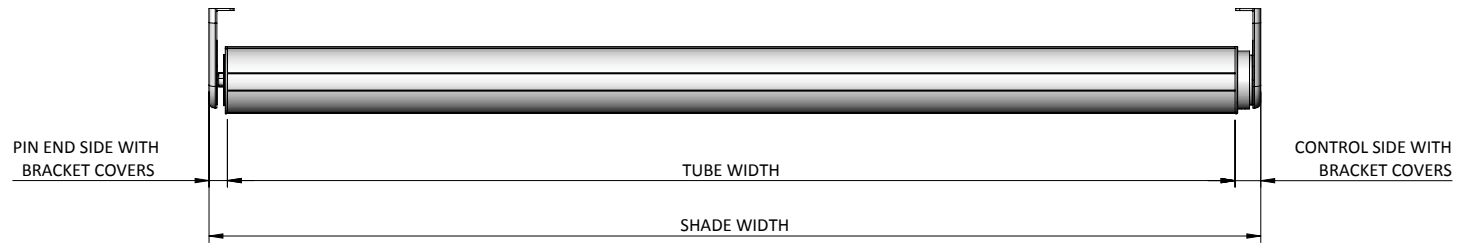


**PRODUCT OPTIONS**



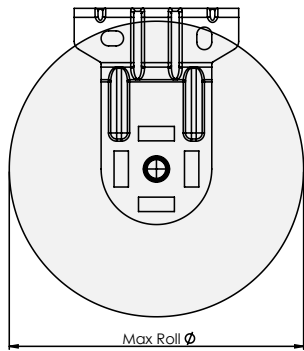
SPECIFICATIONS

DEDUCTION CHART



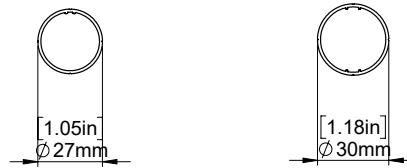
MOTOR	TUBE	BRACKETS	LIGHT GAP			MINIMUM SHADE WIDTH	
			CONTROL END	PIN END	OVERALL	MTDCBRF18-0.2	MTDCRF18-0.2
MTDCBRF18-0.2/ MTDCRF18-0.2	1" & 1/8"	With Covers	0.79" [20mm]	0.55" [14mm]	1.34" [34mm]	1.80' [0.550m]	
		No Covers	0.71" [18mm]	0.51" [13mm]	1.22" [31mm]	1.31' [0.400m]	

MAX ROLL



BRACKET	MAX ROLL SIZE
SLNBxx650xx	2-3/8" [59mm]
SLxx660xx	3" [76mm]
SLxx680xx	4" [102mm]

TUBE SPECS.



1" Tube

Code: RTEA1T12

Length 12'  
[3.66m]

1 1/8" Tube

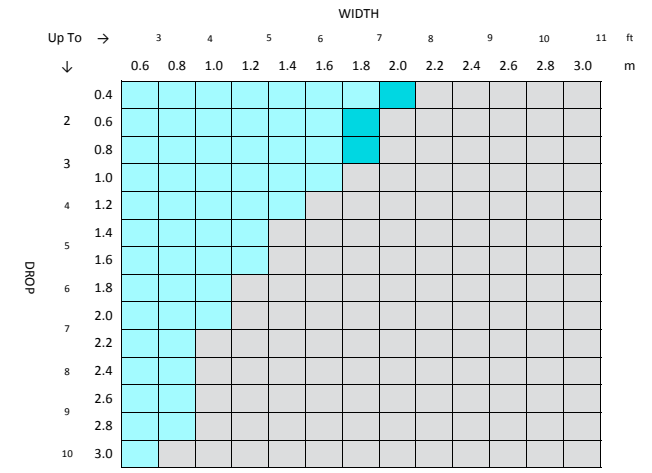
Code: RTEA2T16

Length 16'  
[4.88m]

1" TUBE		1 1/8" TUBE	
Ø WIDTH	MAX DROP	Ø WIDTH	MAX DROP
5.9' [1.80m]	1.3' [0.40m]*	6.6' [2.00m]	1.3' [0.40m]*
2.0' [0.60m]	9.9' [3.00m]*	2.0' [0.60m]	9.9' [3.00m]*

\* Recommended Max Drop. Exceeding this value may cause fabric tracking issues

SYSTEM CAPACITY



Fabric Thickness: 0.024" [0.60mm]  
Fabric Density: 12.39oz/yd<sup>2</sup> [420gsm]  
Weight Bar: D30 Silent Medium Aluminium Bottom Rail

CONTROL	TUBE
25mm Motor	RTEA1T## - 1"
	RETAZT## - 1.125"
	OUTSIDE SPECIFICATIONS